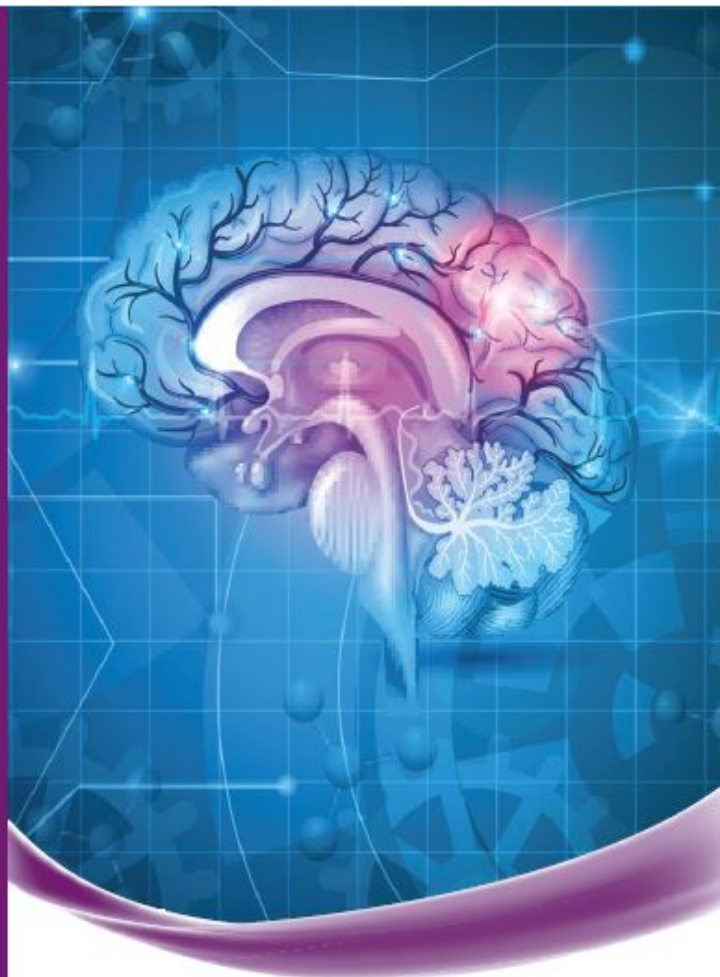


# ACUTE STROKE MANAGEMENT

## 14th Annual Conference for Nurses



**Friday, April 5, 2019**

Course Directors: **Benjamin K. Morrow, MSN, RN**  
**Eileen Roach, MSN, RN**

DoubleTree by Hilton Pittsburgh-Cranberry  
910 Sheraton Drive • Mars, Pennsylvania

**UPMC** **LIFE  
CHANGING  
MEDICINE**

*Sponsored by University of Pittsburgh School of Medicine,  
Center for Continuing Education in the Health Sciences, and  
Stroke Institute, Department of Neurology*

## Introduction

The 14th Annual Acute Stroke Management Conference is designed to provide the most recent advances in stroke care for nurses and health care providers including physical, occupational, and speech therapists. This event is held annually to assist with educational requirements of nurses who work at certified stroke centers and to provide education to health care professionals who care for stroke patients.

## Objectives

- Identify 3 barriers to transporting stroke patients from a lower level to a higher level of care
- Identify two stroke scales that can be used to assess special populations
- Discuss how central retinal artery occlusions are diagnosed and the first line treatment modalities
- Differentiate between the treatment options for ICH and SAH patients
- Summarize acceptable healthy food choices for patients during the post stroke recovery period
- Differentiate between different types of stroke and determining eligibility for treatment
- Describe how stroke care can be modified to meet the needs of the pregnant patient
- Explain three common cognitive limitations stroke patients experience during the recovery phase
- Describe the post-stroke challenges patients and caregivers encounter

## Continuing Education Credit

UPMC Provider Unit is accredited as a provider of continuing nursing education by the American Nurses Credentialing Center's Commission on Accreditation.

To receive 6.5 Contact Hours, the participant must attend the entire activity and complete the activity evaluation. No partial hours/credits will be awarded.

## Who Should Attend

This one-day conference is geared towards nurses and other health care professionals who are affiliated with neurology, emergency medicine, neurosurgery, physical therapy and occupational therapy and are working with patients from pre- through post-acute stroke care.

## Course Faculty

### Course Directors

**Benjamin K. Morrow MSN, RN**  
Program Director UPMC Stroke  
Institute Pittsburgh, PA

**Eileen Roach MSN, RN**  
Quality Manager UPMC Stroke  
Institute Pittsburgh, PA

---

### Planning Committee

**Roger Arnold BSN, RN** UPMC Bedford  
**Janet Ashurst BSN, RN** UPMC Altoona  
**Kimberly Botti BSN, RN** UPMC East  
**Annette Clements MSN, RN** UPMC Stroke Institute  
**Kimberly Klamut MSN, RN** UPMC Shadyside  
**Beverly Lawton MSN, RN** UPMC Northwest  
**Romi Ogiso BSN, RN** UPMC Mercy  
**Kelly Provencher BSN, RN** UPMC Horizon  
**Christine Rozanski MSN, RN** UPMC McKeesport  
**Kathleen Seiler BSN, RN** UPMC Mercy  
**Ann Sokoloff BSN, RN** UPMC Hamot  
**Linda Yelen BSN, RN** UPMC Passavant/St. Margaret

### Invited Faculty

**Ashutosh Jadhav MD, PhD**  
Associate Professor of Neurology &  
Neurosurgery UPMC Stroke Institute

**Kavit Shah MD**  
Vascular Stroke Fellow  
UPMC Stroke Institute  
Endovascular Fellow

**Allison Kakabar MS, RD LDN**  
Clinical Dietician II  
UPMC Presbyterian

**Katherine Spiering MSN, RN**  
Programmatic Nurse Specialist Neuro  
Trauma ICUs  
UPMC Presbyterian

**Tammy Kordes PhD**  
Neuro Psychologist  
Northshore Neurosciences, Erie, Pa

**Susan Underwood MSN, RN** Advanced  
Clinical Specialist  
UPMC Mercy

**Marcelo Rocha MD, PhD**  
Assistant Professor Department of  
Neurology, UPMC Stroke Institute

**Janet Waters MD, MBA**  
Division Chief Women's Neurology  
Magee Women's Hospital of UPMC

*All individuals in a position to control the content of this education activity are required to disclose all relevant financial relationships with any proprietary entity producing, marketing, re-selling, or distributing health care goods or services, used on, or consumed by, patients.*

**Schedule -**

**Friday, April 5, 2019**

- 7:45 am **Conference Overview**  
Eileen Roach MSN, RN
- 8:00 am **Am I coming or Going?**  
**Door in Door Out for Acute Stroke**  
Kavit Shah MD
- 8:30 am **Neuro Exams, Alternative Stroke Scales & More!**  
Susan Underwood MSN, RN  
Kate Spiering MSN, RN
- 9:15 am **Central Retinal Artery Occlusions: Diagnosis & Treatment Options**  
Marcelo Rocha MD, PhD
- 9:45 am **BREAK**
- 10:15 am **Modern Management of Major Hemorrhage**  
Benjamin Morrow MSN, RN
- 11:00 am **I had a Stroke, so NOW what do I eat?**  
Allison Kakabar MS, RD, LDN
- 11:30 am **LUNCH**
- 12:30 pm **Stroke Clinical Vignettes**  
Ashutosh Jadhav MD, PhD
- 1:15 pm **Oh Baby! Caring for the Pregnant Stroke Patient**  
Janet Waters MD, MBA
- 2:00 pm **BREAK**
- 2:15 pm **The Neuropsychology of Stroke**  
Dr. Tammy Kordes PhD
- 3:00 pm **Stroke Survivor Panel**  
Moderator: Linda Yelen BSN, RN
- 3:45 pm Questions and Answers
- 4:00 pm Conference Adjournment

## Registration Information

Early Registration • \$85 • On or before **March 22, 2019**

Early Registration is **online**. Paper registration is **by exception only** — see bottom of page.

Late Registration • \$100 • After **March 22, 2019**

Late Registration is paper only — see bottom of page.

On-Site Registration • \$100 • **Based on availability**.

### Registration fee includes:

- Continuing education credit
- Registration and course materials
- Continental breakfast and lunch

### How to Register Online

1. Visit our online registration site at <https://ccehs.upmc.com>
2. Select Upcoming Events, then select course listed by date.
3. Click the Registration button and enter all the requested information (including an email address) and follow the prompts to submit your registration after entering your payment information.
4. You will receive an immediate e-mail confirmation.
5. Print the e-mailed confirmation for your records. It is recommended to bring this print-out with you to the conference. If you do not receive this confirmation, contact us at **(412) 647-3030**

### Paper Registration

Paper registration forms should be requested for the following types of attendees:

- UPMC employees paying by journal transfer. Early and late registration.
- Non-UPMC institutions paying by check. Early and late registration.
- All late registration attendees.

Contact Kim Birsic at [strokeconf@upmc.edu](mailto:strokeconf@upmc.edu) or **(412) 647-3030** for more information.

## Registration Information (continued)

**Cancellation:** All cancellations must be in writing and sent to us via U.S mail, email, or fax. Tuition for cancellations postmarked or date stamped before **March 22, 2019** will be completely refunded. No refunds will be made after **March 22, 2019**. Cancellation requests can be made to:

### **Kim Birsic**

UPMC Stroke Institute

200 Lothrop Street • C-400, PUH • Pittsburgh, PA 15213

Telephone: (412) 647-3030 • Fax: (412) 647-8445

Email: [strokeconf@upmc.edu](mailto:strokeconf@upmc.edu)

## Special Needs

Participation by all individuals is encouraged. Advance notification of any special needs will help us provide better service. Please notify us of your needs at least two weeks in advance of the program by contacting Kim Birsic via email: [strokeconf@upmc.edu](mailto:strokeconf@upmc.edu) or by telephone: (412) 647-3030.

***Room temperature can vary and be difficult to control;  
please dress accordingly to maintain your comfort.***


## Meeting Location

The conference will be held at the **Doubletree by Hilton Hotel Pittsburgh Cranberry, 910 Sheraton Drive., Mars PA, 16046;** Phone (724) 776-6900. The hotel will offer ASM guests, based on availability, a discounted room rate of \$119.00 plus 9% applicable state and local taxes. Please note there is no hotel room block but a discounted room rate based on availability. To receive this rate please mention you will be attending the ASM conference.

**Visit the Center for Continuing Education  
in the Health Sciences Web Site**

Our Internet address is: **<https://ccehs.upmc.com>**

The UPMC Center for Continuing Education in the Health Sciences invites you to visit our web location. Receive information on CME programs, earn CME credits on the Internet, and access information about our formal courses and much more. Discover who we are and how you can contact us. Please visit our web location often to get updated information on upcoming programs.



*The University of Pittsburgh is an affirmative action, equal opportunity institution*